



**2022 LHSAA SELECT DIVISION
BOYS' STATE BASKETBALL CHAMPIONSHIPS**

TEAM BULLETIN

**MARCH 02 - 05, 2022
LAFAYETTE CAJUNDOME
LAFAYETTE, LOUISIANA**



Table of Contents

CONTENT	PAGE
LHSAA SPONSORS	1
CAJUNDOME INFORMATION	2
SCEHDULE OF EVENTS	3
PARKING	4
TICKETING AND ENTRANCES	5
SEATING MAP	6
LOCKER ROOMS	7
HOSPITALITY, MEDIA, AND PICTURES	7
TEAM GRAPHICS AND ROSTERS	8
JERSEYS	8
HALFTIME INFORMATION	8
FRIDAY PRACTICE TIMES	9
WRISTBAND IDENTIFICATION AND ACCESS	9
LHSCA COACHING CARDS	10
REVENUE PAYOUTS	10
MEDIA	10
CAJUNDOME CLEAR BAG POLICY	11
HOTELS	12
TUESDAY PRACTICE AVAILABILITY	13
ROMA PICS	14



LHSAA CORPORATE PARTNERS

THE LHSAA WOULD LIKE TO THANK THE FOLLOWING 2021-2022
PARTNERS FOR THEIR CONTINUED DEDICATION & SUPPORT
OF HIGH SCHOOL ATHLETICS IN LOUISIANA



LHSAA TITLE PARTNER



TEAM LHSAA



Sports Medicine Institute



POWERADE

LHSAA STATEWIDE PARTNERS



LHSAA TEAMMATES



SERVING LOUISIANA'S YOUTH FOR OVER 100 YEARS

CAJUNDOME INFORMATION

The CAJUNDOME is a modern entertainment, convention, and sports venue located in the Heart of Acadiana. The CAJUNDOME was built by the State of Louisiana, partly funded by the City of Lafayette, and is owned by the University of Louisiana at Lafayette.



For safety reasons, patrons may be refused entry if they are in possession of prohibited items including, but not limited to: alcoholic beverages, illegal drugs, food, drinks, glass/plastic/-metal containers, video recorders, audio recorders, fireworks, laser pointers, backpacks, coolers, knives, weapons of any type, baby seats, strollers or carriers, unauthorized noise makers, glitter, confetti, streamers, helium balloons, basketballs, hockey sticks, beach balls, parcels or packages, inflatables, or large bags of any kind.



The CAJUNDOME has an adjustable capacity up to 13,000 and boasts state-of-the-art audio/visual amenities including a modern high-definition display board.

SCHEDULE OF EVENTS

WEDNESDAY, MARCH 02, 2022		
10:00 AM	DIVISION V SEMIFINAL	TOP OF BRACKET
12:00 PM	DIVISION V SEMIFINAL	BOTTOM OF BRACKET
2:00 PM	DIVISION IV SEMIFINAL	TOP OF BRACKET
4:00 PM	DIVISION IV SEMIFINAL	BOTTOM OF BRACKET
6:00 PM	DIVISION II SEMIFINAL	TOP OF BRACKET
8:00 PM	DIVISION II SEMIFINAL	BOTTOM OF BRACKET
THURSDAY, MARCH 03, 2022		
2:00 PM	DIVISION III SEMIFINAL	TOP OF BRACKET
4:00 PM	DIVISION III SEMIFINAL	BOTTOM OF BRACKET
6:00 PM	DIVISION I SEMIFINAL	TOP OF BRACKET
8:00 PM	DIVISION I SEMIFINAL	BOTTOM OF BRACKET
SATURDAY, MARCH 05, 2022		
12:00 PM	DIVISION V FINAL	
2:00 PM	DIVISION IV FINAL	
4:00 PM	DIVISION III FINAL	
6:00 PM	DIVISION I FINAL	
8:00 PM	DIVISION II FINAL	

PARKING



Spectator Parking is available via WEST LOT GATE 8. Overflow Parking will be available at Cajun Field on the opposite side of Cajundome Blvd after 5:00 p.m. Spectator Drop-Off is in front of the Ticket Box - Dropoffs should enter Gate 12 and exit Gate 14.



ADA Parking is available via Gate 12



Bus Parking is available via TRUCK and RV LOTS GATE 8. This parking area is restricted to team and school use only.



Officials Parking is available via TOUR LOT GATE 8. This parking area is restricted to Team Personnel Cars, Officials, Staff, and Medical Personnel only.



TICKETING AND ENTRANCES

Tickets for the LHSAA Select Division Boys' Basketball Championships are available at ticketmaster.com or Ticket Master charge by phone at 1 (800) 745-3000. Tickets can also be purchased at the CAJUNDOME Box Office located at the South Entrance of the CAJUNDOME

Tickets for the Semifinals on March 2nd and 3rd are divided by Division and are \$17 exclusive of transaction fees. Tickets for the Finals on Saturday, March 5th are \$22 exclusive of transaction fees. **The CAJUNDOME will not be cleared in between games; a single ticket will grant access for the entire day.** There is no re-entry allowed.

Spectator entrances are located on the Southern side of the CAJUNDOME adjacent to the Box Office.





Teams will enter via the Yellow Tunnel on the Northwest corner of the facility.

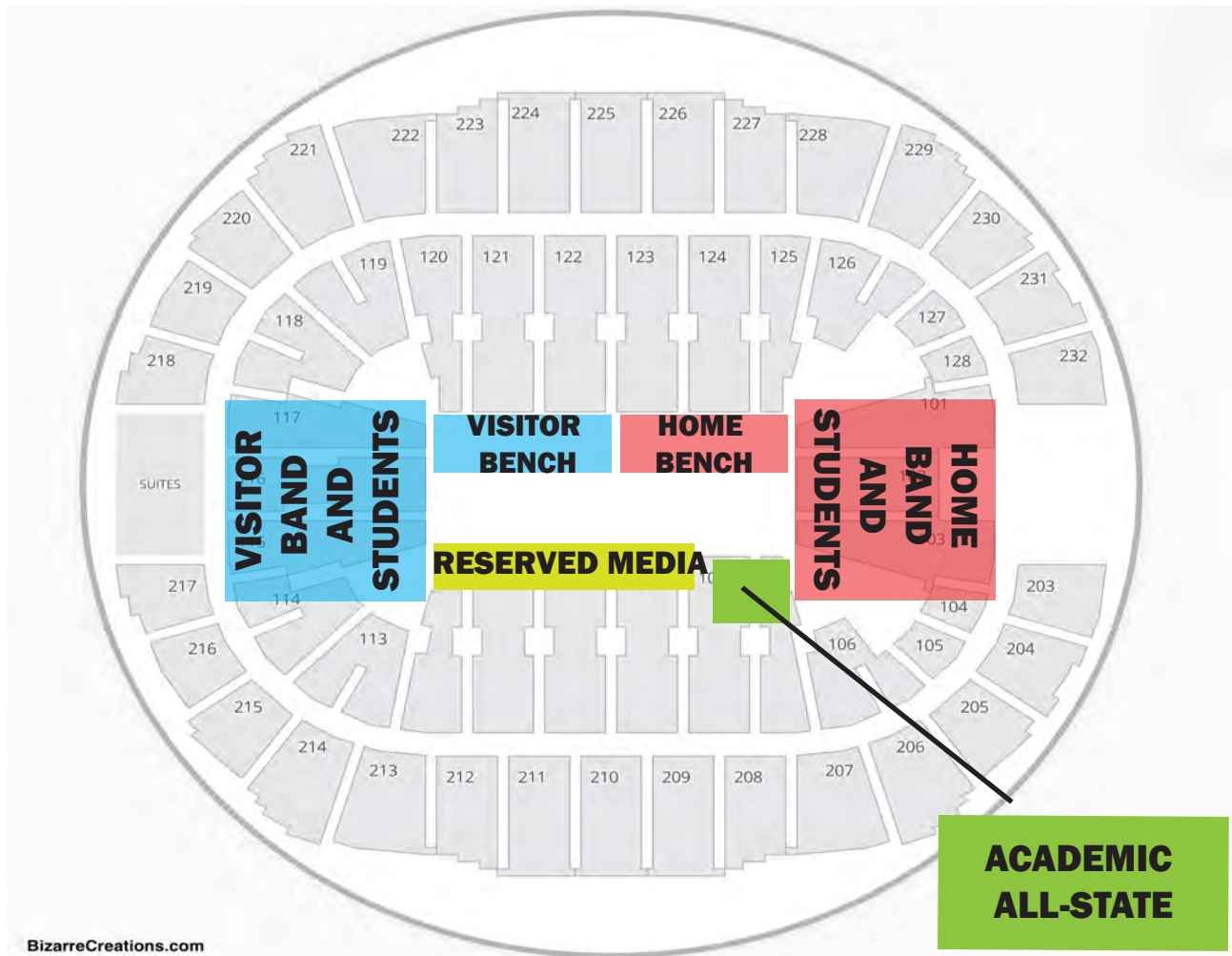
Staff, Officials, Media, and Medical Personnel will enter the North Stage Entrance on the Northside of the arena.



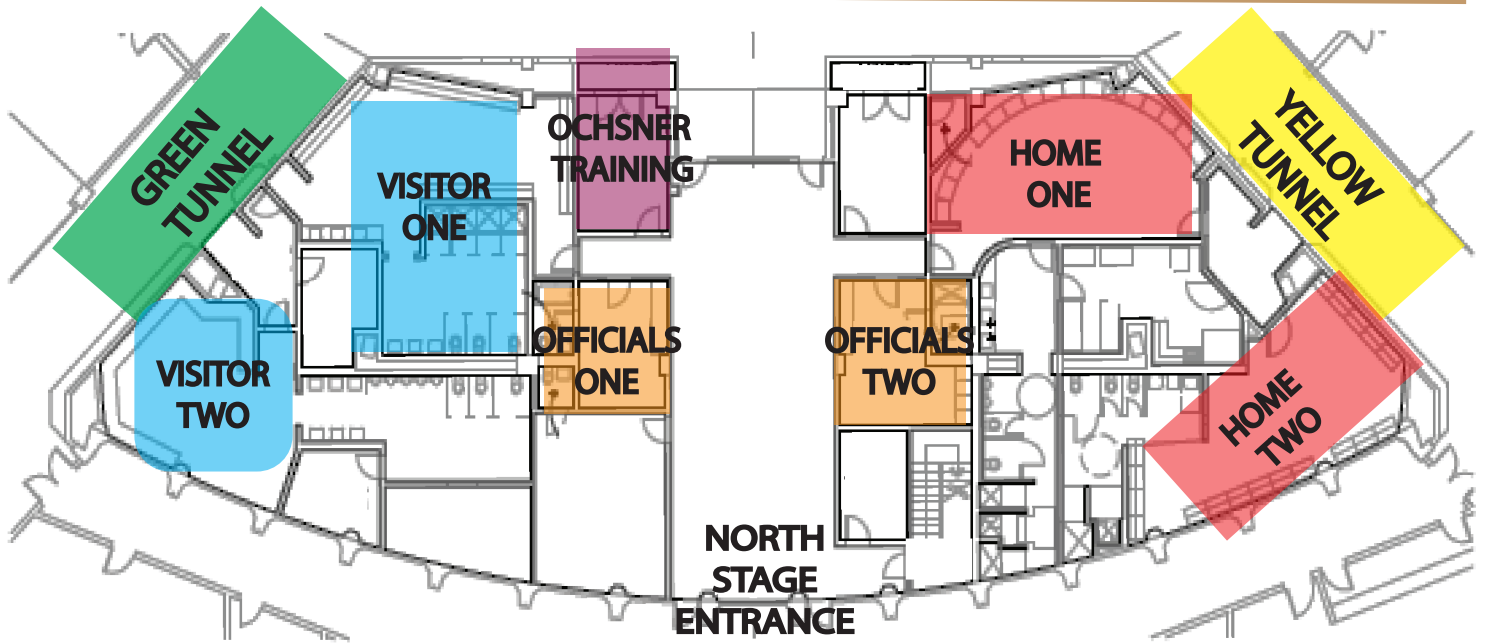
SEATING

Seating for the LHSAA Boys' Select Division State Championships will be general admission with the exception of the following areas:

-  The high seed in each game will be designated the “home team” and will occupy the team bench on the locker room side of the CAJUNDOME opposite the media. The area behind the adjacent goal will be reserved for the home team’s band and
-  The low seed in each game will be designated the “visitor team” and will occupy the team bench on the suite side of the CAJUNDOME opposite the media. The area behind the adjacent goal will be reserved for the visitor team’s band and students
-  The seating area on the floor opposite the team benches shall be reserved for media.
-  Section 107, next to reserved media area, shall be reserved for members of the Academic All-State teams



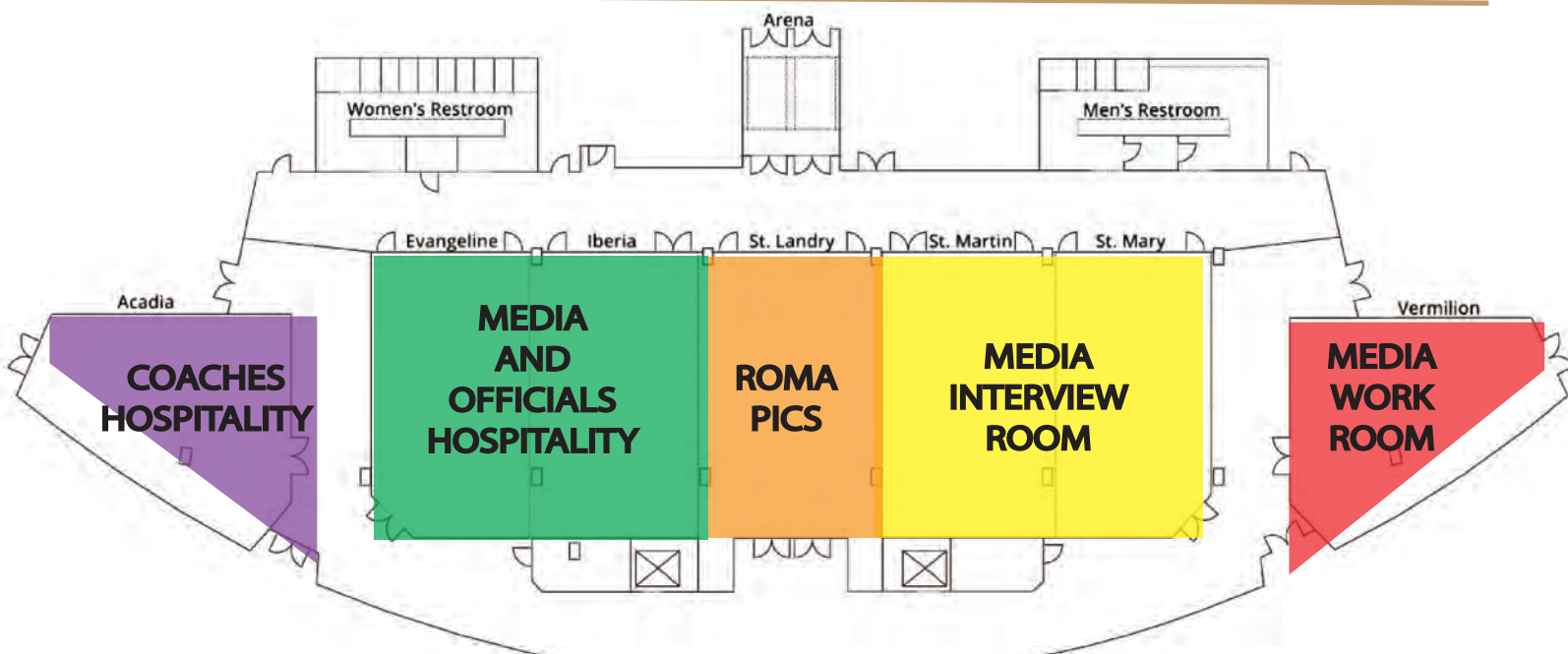
LOCKER ROOMS



The high seed in each game will be designated the home team. Home team lockerrooms will rotate game to game. Home teams will enter and exit the floor via the Yellow Tunnel.

The low seed in each game will be designaed the visiting team. Visitor team lockerrooms will rotate game to game. Visiting teams will enter and exit the floor via the Green Tunnel

MEDIA, HOSPITALITY, AND PICTURES



TEAM GRAPHICS AND ROSTERS

Team graphics and rosters must be submitted to Mike McGuire at mike_mcguire@mpcds.com by SUNDAY, FEBRUARY 27 at 6:00 p.m.

School Logos

Must be square aspect ratio

High quality .JPG

Videos

Must be minimum 720p

File type either .mp4 or .avi

JERSEYS

For all semifinal and final games, the team with the higher seed shall be the home team and will wear white jerseys.

HALFTIME INFORMATION

Halftime performances will be allowed at the semifinals and finals. All performances must be a maximum of three minutes. Any music or announcements must be provided to the scorer's table upon the team's arrival. For all games, the home team will perform first followed by the visiting team.

During the finals, presentation of LHSAA All-Academic Composite Team will precede team performances.

FRIDAY PRACTICE TIMES

Finalists will have the opportunity to conduct practice at the CAJUNDOME on Friday, March 04, 2022. All practices will be one hour.

FRIDAY PRACTICE TIMES		
3:00 PM	DIVISION V HIGH SEED	DIVISION IV HIGH SEED
4:00 PM	DIVISION V LOW SEED	DIVISION IV LOW SEED
5:00 PM	DIVISION III HIGH SEED	DIVISION I HIGH SEED
6:00 PM	DIVISION III LOW SEED	DIVISION II LOW SEED
7:00 PM	DIVISION I LOW SEED	DIVISION II HIGH SEED

WRISTBAND IDENTIFICATION

Coaches and school personnel will receive **ORANGE** wristbands for access into and around the arena

Staff and Medical Personnel will receive **GREEN** wristbands for access into and around the arena

Media members may use their media credentials or **YELLOW** wristbands for access into and around the arena.

LHSCA COACHES CARDS

LHSCA Coaches' Cards will be accepted that the 2022 LHSAA Boys's Select State Basketball Championships. There will be a dedicated ticket booth at the Box Office for Coaches' Cards and Academic All-State Members. Coaches must present their Coaches' Card and a valid ID to receive their tickets. They will also register with the log of names.

REVENUE PAYOUTS

Teams will receive proportional payouts following payment of LHSAA dues and CAJUNDOME and Lafayette Convention and Visitor Commission expenses.

Semifinalists shall receive 25% of net receipts for semifinal ticket sales for their Division.

Finalists shall receive 50% of net receipts for final ticket sales for their Division.

MEDIA

Media members will reserved courtside seating and work room access. Media shall select the Most Outstanding Player for each division at the conclusion of the final game.

Media shall conduct interviews in the interview room following each game. The head coach along will players selected by the media will be in attendance.

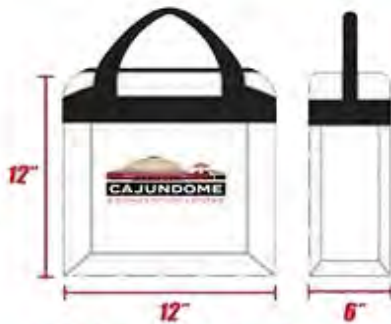
For any questions or concerns regarding media, please contact
Casey White at cboudreaux@cajundome.com

CLEAR BAG POLICY



NEW CLEAR BAG POLICY NOW IN EFFECT FOR ALL TICKETED EVENTS

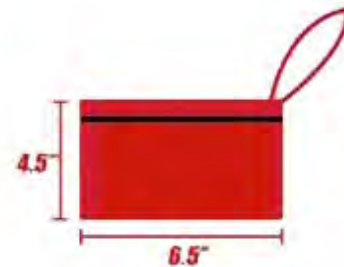
APPROVED ITEMS



CLEAR TOTE: PLASTIC, VINYL OR PVC AND MAY NOT EXCEED 12" X 12" X 6"



STORAGE BAG: 1 GALLON CLEAR STORAGE BAG



CLUTCH OR SMALL PURSE: WITH/WITHOUT STRAP, MAY NOT EXCEED 6.5" X 4.5" X 1"

ALSO APPROVED, BUT NOT PICTURED ABOVE: DIAPER BAGS FOR AGE-APPROPRIATE CHILDREN ACCOMPANIED BY AN ADULT AND EQUIPMENT BAG NECESSARY FOR MEDIAL ITEMS.

PROHIBITED ITEMS



LARGE PURSES



BACKPACKS / BRIEFCASES



DUFFLE BAGS



MESH BAGS



FANNY PACKS



DRAWSTRING BAGS



CAMERA / BINOCULAR BAGS



NON-CLEAR / PATTERNED BAGS

PROHIBITED BAGS INCLUDE, BUT ARE NOT LIMITED TO: LARGE PURSES, BRIEFCASES, BACKPACKS, DUFFLE BAGS, MESH BAGS, FANNY PACKS, DRAWSTRING BAGS, TINTED OR PRINTED-PATTERN PLASTIC BAGS OR ANY BAG LARGER THAN THE PERMISSIBLE SIZE 12" X 12" X 6".

HOTELS

Hotel/Facility	Address	Rate Start
Candlewood Suites	2105 Kaliste Saloom Rd.	\$129.00
Comfort Inn & Suites-Scott	1636 Saint Mary St.	\$124.00
Comfort Suites-Oil Center	114 Rue Fernand	\$114.00
Courtyard by Marriott Lafayette South	200 Frem Boustany Dr.	\$119.00
Days Inn by Wyndham Lafayette	2501 SE Evangeline Thrwy.	\$62.25
Fairfield Inn & Suites Lafayette South	1606 W. Pinhook Rd.	\$119.00
Hampton Inn Broussard	2280 E. Main St.	\$139.00
Hilton Garden Inn-Lafayette Cajundome	2350 W. Congress St.	\$119.00
Holiday Inn - Lafayette North	2219 NW Evangeline Thrwy.	\$129.00
Holiday Inn Express & Suites- Ambassador Caffery Pkwy.	3903 Ambassador Caffery Pkw	\$129.00
Holiday Inn Express & Suites-Scott	736 I-10 S. Frontage Rd.	\$129.00
Home2 Suites by Hilton Parc Lafayette	1909 Kaliste Saloom Rd.	\$139.00
Residence Inn by Marriott	128 James Comeaux Rd.	\$139.00
Super 8 Motel	2224 NE Evangeline Thrwy.	\$62.25

TUESDAY PRACTICE AVAILABILITY

The CAJUNDOME will not be available for practice on Tuesday, March 1st. However, teams are encouraged to contact one of the following LHSAA members for court availability:

St. Thomas More
Coach Danny Broussard
(337) 278-8324
450 E. Farrel Rd. 70508

Teurlings Catholic
Coach Jake Deuitt
(337) 278-9407
139 Teurlings Dr. 70501

Ascension Episcopal
Coach Eric Mouton
(337) 236-6777
1030 Johnston St. 70501

ROMA PICS



**To view and purchase Action
and Awards photos from the
2022 Boys Select Basketball
Championships,**

Text BOYSSELECT22 to 90738



*For more information, visit
www.romapics.com*



ROMA PICS



Package A

SAVE \$55!!!

- 1 - 10x20 Team Photo
- 1 - 8x10 Individual Photo
- 2 - 5x7 Individual Photos
- Individual Digital Download
- 16 - Wallets

\$95

Package B

- 1 - 10x20 Team Photo
- 1 - 8x10 Individual Photo
- 2 - 5x7 Individual Photos
- 8 - Wallets

SAVE \$20!!!

\$75

Package C

- 1 - 8x10 Individual Photo
- 2 - 5x7 Individuals Photos
- 8 - Wallets

\$55

Package D

DIGITAL DOWNLOAD

Athlete's Individual Image emailed to you.

\$35



All players will be photographed on the official LHSAA background.



Commemorate this special moment with LHSAA State Championship graphics!

Graphics and logos are subject to change.

2319 METAIRIE ROAD | METAIRIE, LA 70001 | 504.828.3064 | www.romapics.com